

Urban garden

SQUARE



| Materials & Finishes

Steel structure th. 3 mm with anti-corrosion treatment and hot-lacquered RAL or AkzoNobel colours of your choice

Adjustable feet (adjustment on a maximum height of 120 mm maximum)

Seat in steel sheet th. 8 mm with anti-corrosion treatment and hot-lacquered RAL or AkzoNobel colours of your choice

| Planting liner

Planting liner n°5 or 6 in recycled polyethylene with anti-UV treatment

Colour Black

Removable drainage grid

Water reserve with overflow

| Fixing

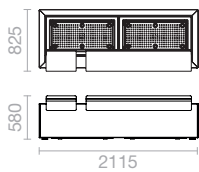
To put on the ground

| Option

Lifting hooks for planting liner

SINGLE BACKLESS BENCH

1



Weight structure: 171 kg

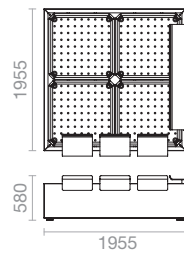
Substrate vol.: 145 l. x 2

Water vol.: 16 l. x 2

Weight: 11 kg x 2

DOUBLE BACKLESS BENCH

2

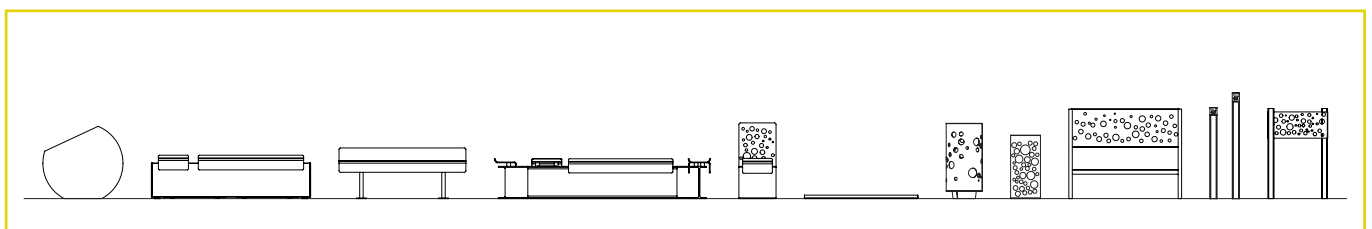


Weight structure: 238 kg

Substrate vol.: 200 l. x 4

Water vol.: 35 l. x 4

Weight: 17 kg x 4



Urban garden

SQUARE



| Materials & Finishes

Steel structure th. 3 mm with anti-corrosion treatment and hot-lacquered RAL or AkzoNobel colours of your choice

Adjustable feet (adjustment on a maximum height of 120 mm maximum)

Seat in steel sheet th. 8 mm with anti-corrosion treatment and hot-lacquered RAL or AkzoNobel colours of your choice

| Planting liner

Planting liner n°5 or 6 in recycled polyethylene with anti-UV treatment

Colour Black

Removable drainage grid

Water reserve with overflow

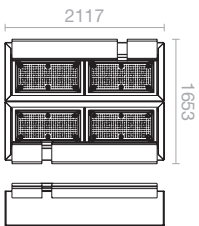
| Fixing

To put on the ground

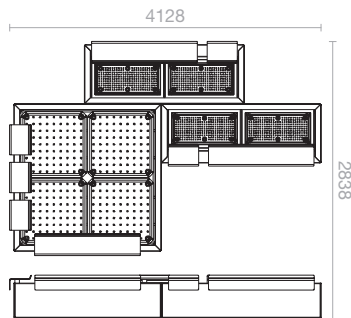
| Option

Lifting hooks for planting liner

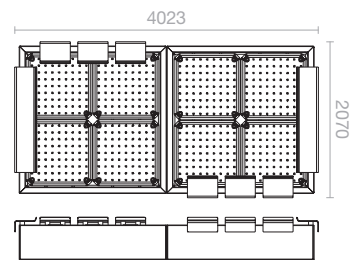
(A) 1-1



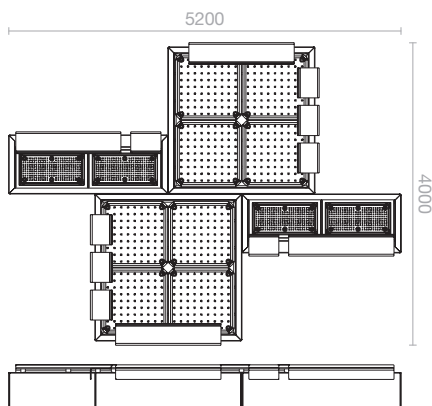
(B) 1-2-1



(C) 2-2



(D) 1-2-2-1



(E) 2-1-1-1-1-2

